

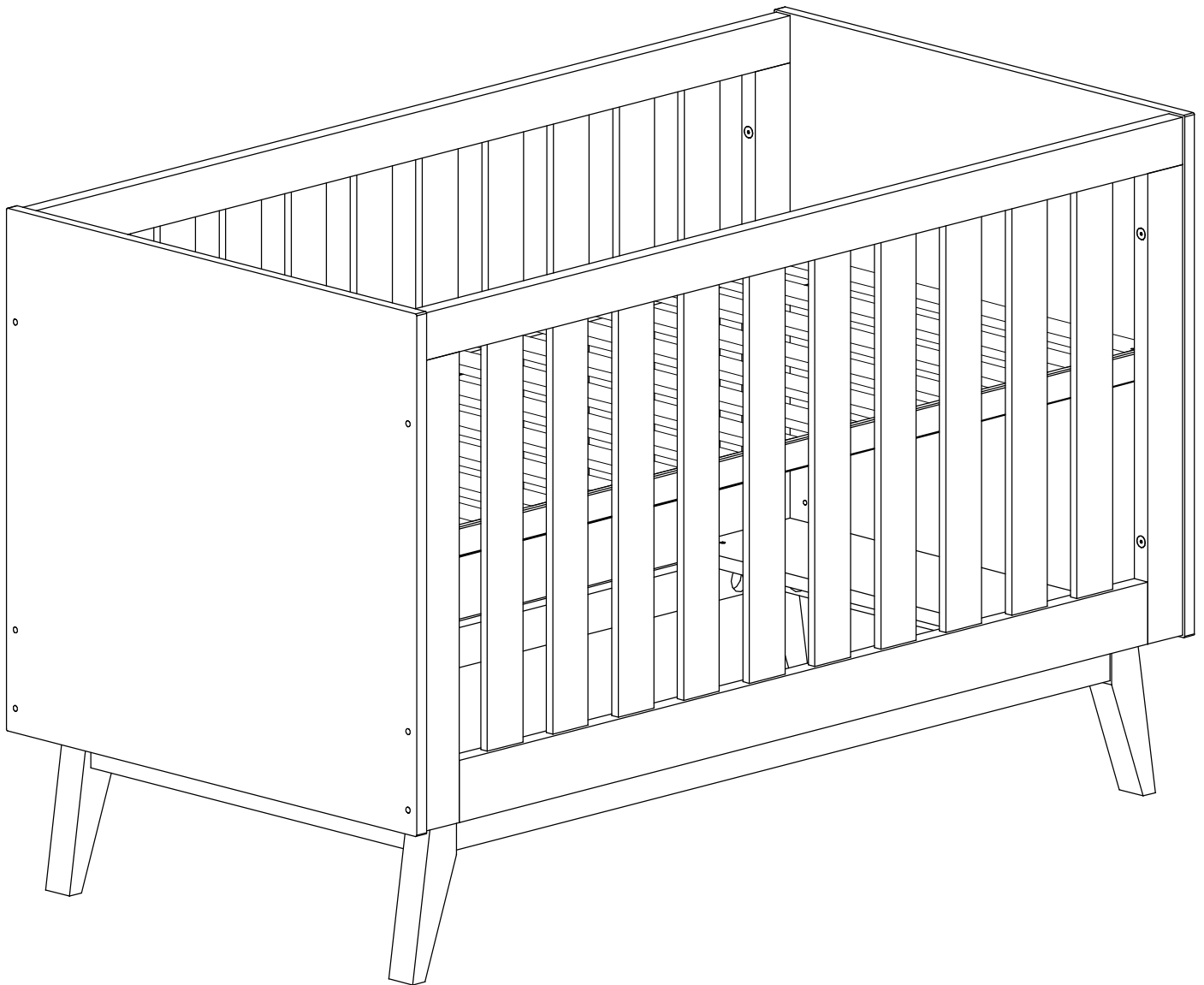
babyrest

TOMMI

COT 140 x 70 cm

Convertible Cot

Assembly instruction



w.:3/8/2022 rys.:TOMMI Cot140.ins

- The manufacturer's assembly instructions must be followed in detail to ensure the safety features of the chest are not compromised.
- To clean the surface, use a damp cloth with water. Do not use window cleaners or cleaning abrasives as this may scratch the surface and could damage the protective coating.



WARNING!

READ ALL INSTRUCTION BEFORE ASSEMBLING COT. KEEP THE MANUAL FOR FUTURE USE.




WARNING: (FALL HAZARD)

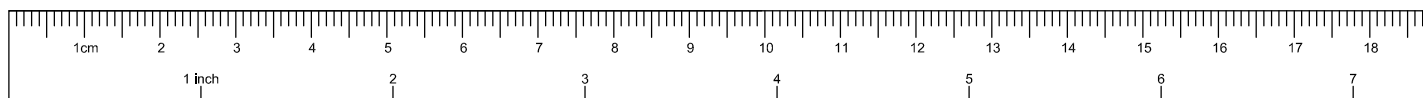
To prevent falls, the mattress base of this cot should be adjusted to the lowest position before the child can sit up.

- Keep the cot at a reasonable distance from curtains, blinds, heaters, and power points.
- Keep medication, string, elastic, small toys or small items, such as money, out of reach from any position in the cot.
- Do not use this if you cannot exactly follow the accompanying instruction.
- Infants can suffocate on soft bedding. Never add a pillow or comforter. Never place additional padding under an infant.
- To reduce the risk of SIDS, paediatricians recommend healthy infants be placed on their backs to sleep, unless otherwise advised by your physician.
- Strangulation Hazard: Strings can cause strangulation! Do not place item with a string around a child's neck, such as hood strings or pacifier cords. Do not place cords, straps, or similar item that could become wound around the child's neck in or around this cot. Do not suspend strings over the cot or attach strings to toys.
- To help prevent strangulation tighten all fasteners. A child can trap parts of the body or clothing on loose fasteners.
- Do not place this cot near a window where cords from blinds or drapes may strangle a child. Do not place this cot near a window or a patio door where a child could reach the cord of a blind or curtain and be strangled.
- Do not use this cot if the child is able to climb out unaided or is taller than 89 cm.
- Check this product for damaged hardware, loose joints, loose bolts or other fasteners, missing parts or sharp edges before and after assembly and frequently during use. Securely tighten loose bolts and other fasteners. Do not substitute parts.
- Do not use water mattress with this cot.
- If refinishing, use a non-toxic finish specified for children's products.
- Never use plastic shipping bags or other films as mattress covers because they can cause suffocation.
- Infants can suffocate in gaps between cot sides when used with a mattress that is too small.
- Follow warnings on all products used in cot.
- Ensure that the sides are properly latched or locked in place when the cot is occupied.
- **RECOMMENDED MATTRESS SIZE:** This cot has been manufactured for use with a mattress which measures 700 mm wide by 1400 mm long and no more than 125 mm thick. The width and length are specified because it is important that the gaps between the mattress and the sides and ends of the cot will not exceed 40 mm when the mattress is pushed to one side or end, and 20 mm when the mattress is centred in the cot. The thickness of the mattress has been specified to ensure that the depth of the cot is greater than 500 mm with the mattress base in the lower position to minimize the risk of a child climbing or falling out of the cot.

HARDWARE INVENTORY

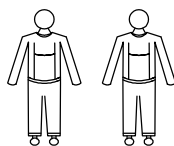
B1  M6=75 mm x8	B2  M6=50 mm x4	B3  M6=35mm x8	C  x4	D1  Maxifix/M6 x8	D2  x8
E1  L-34/M6 x8	E2  Ø15=15mm x8	F  Ø9 (M6)=18mm x8	 SW6 x1	 SW4 x2	
TOMMI COT140					

(!) Check hardware against ruler for correct screw. Example Item B2 is 50mm long



Tools required:

1x PZ2 Pozidrive head screwdriver



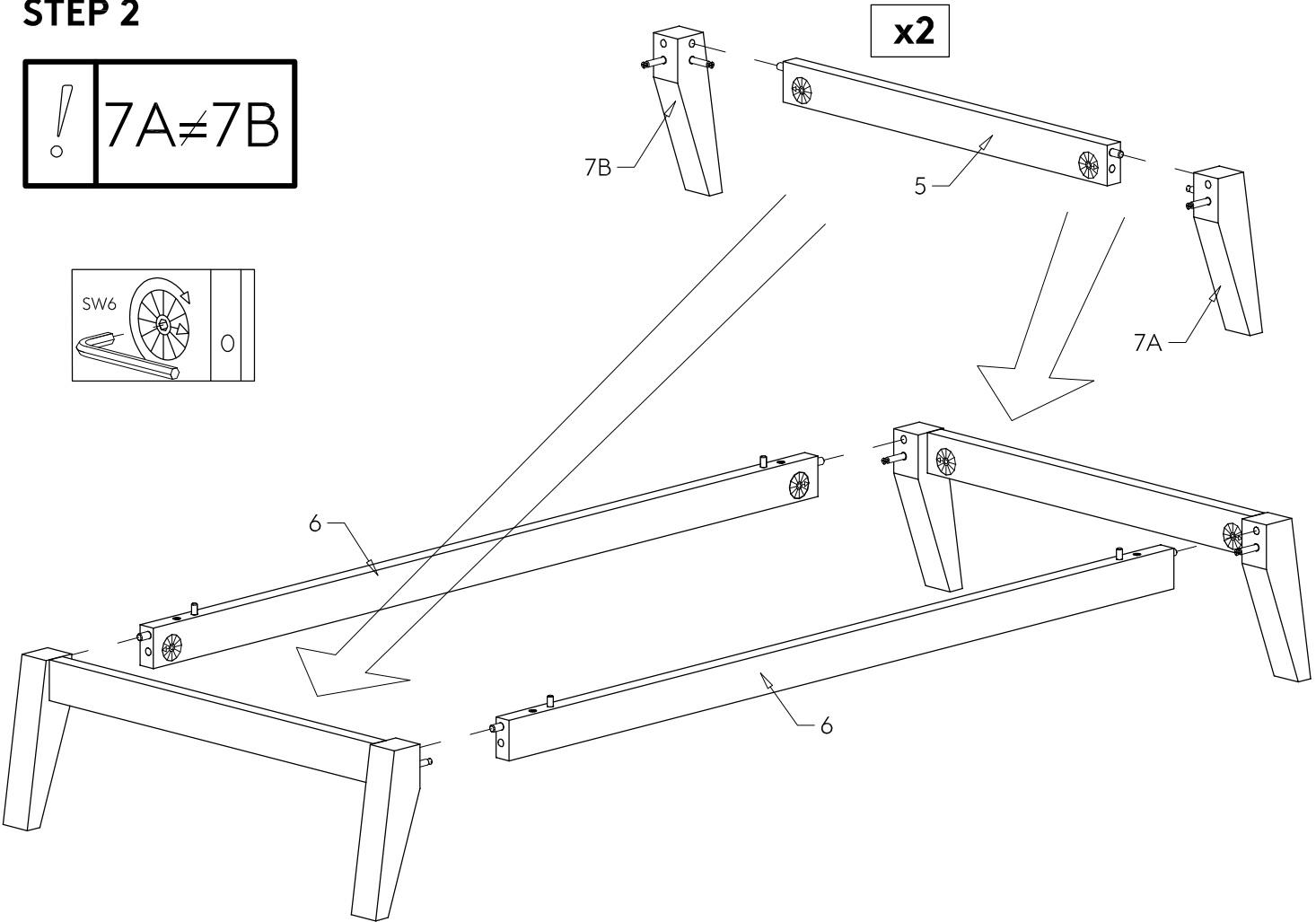
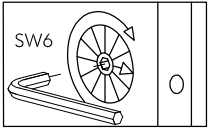
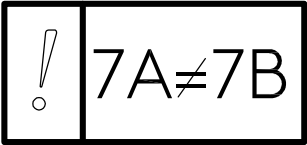
Assembly of this product requires two people.
Read all instructions before assembly and use of this product.

WARNING: Do not leave children unattended near furniture during installation.
Small parts can cause suffocation.

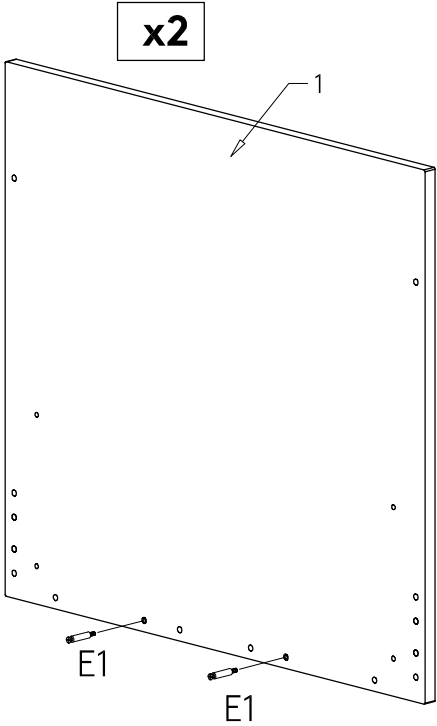
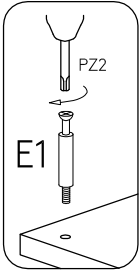
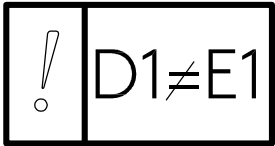
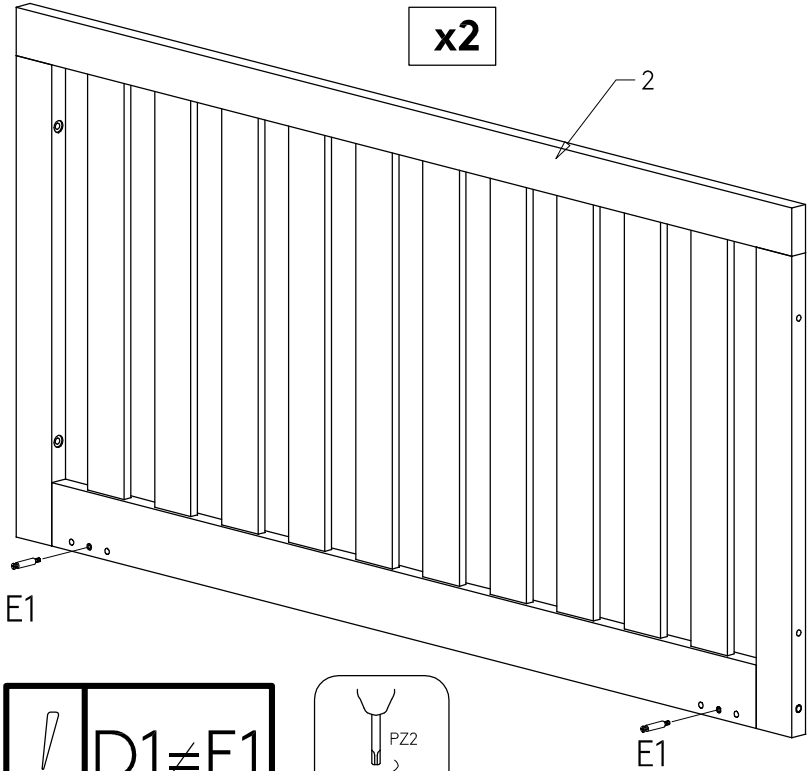
Keep packaging and instructions in a safe place.

Do not overtighten screws.

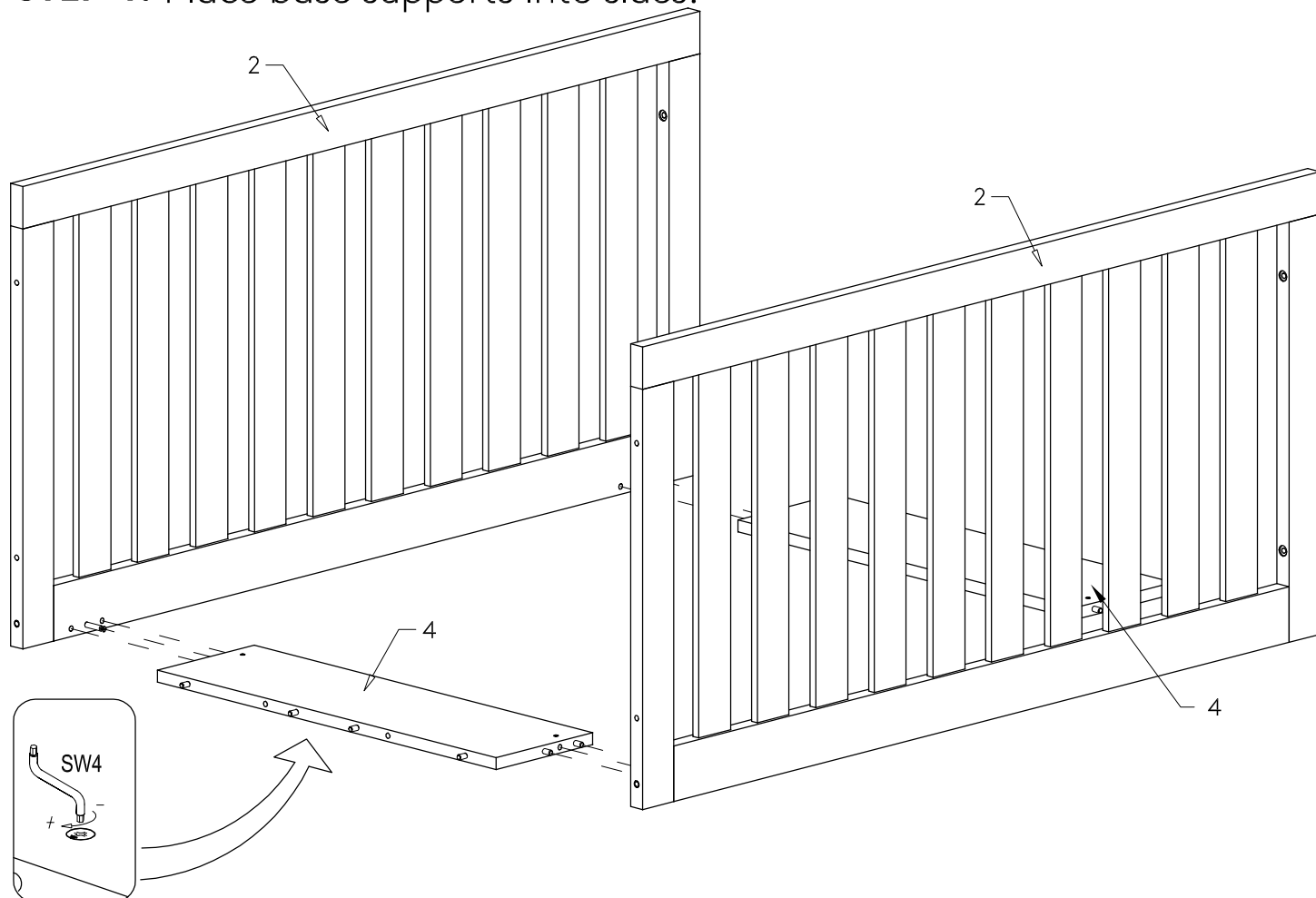
STEP 2



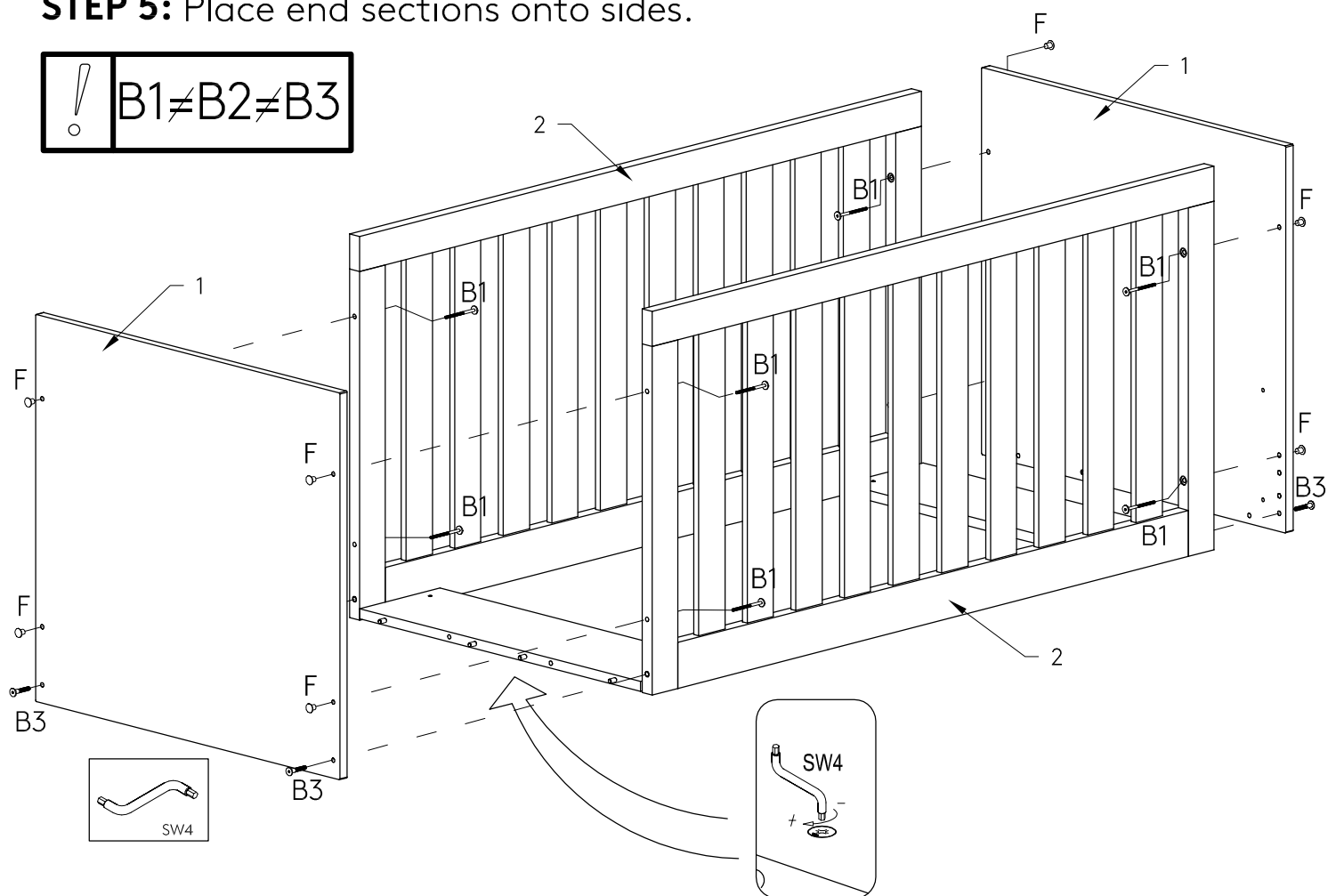
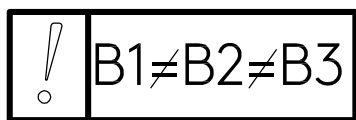
STEP 3: Assemble Sides and Ends together.



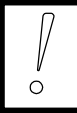
STEP 4: Place base supports into sides.



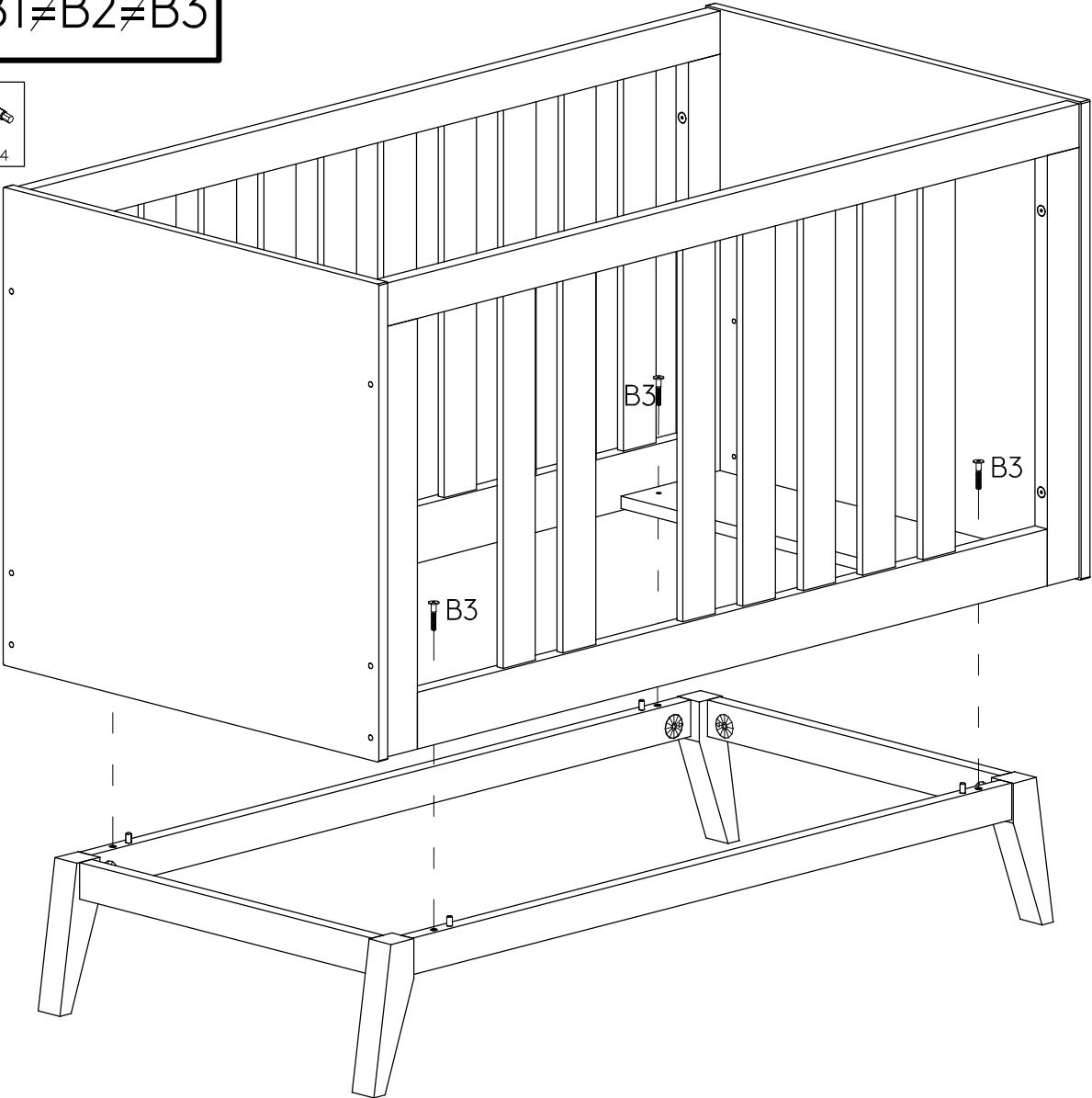
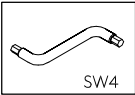
STEP 5: Place end sections onto sides.



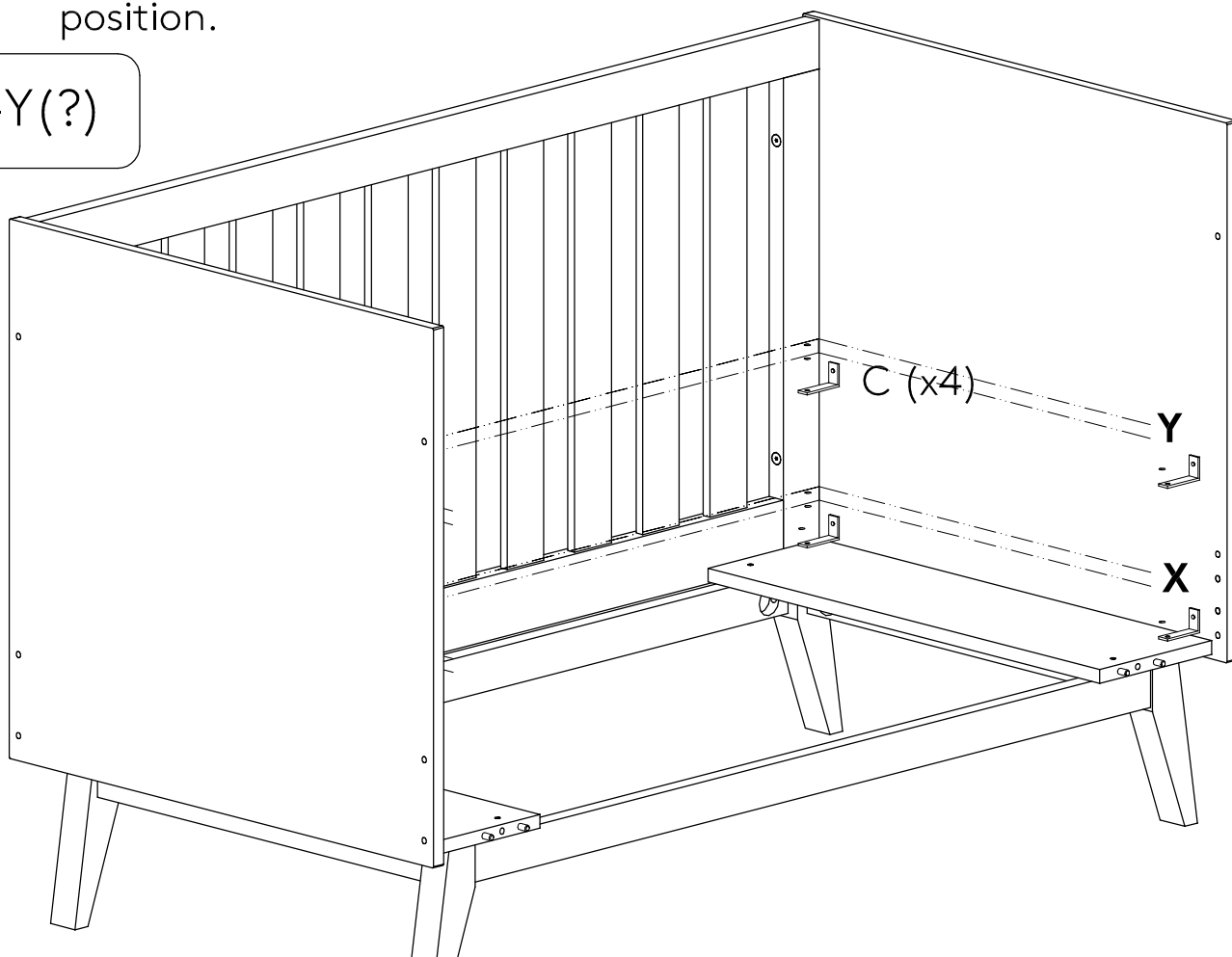
STEP 6: Place Cot frame onto the leg frame.



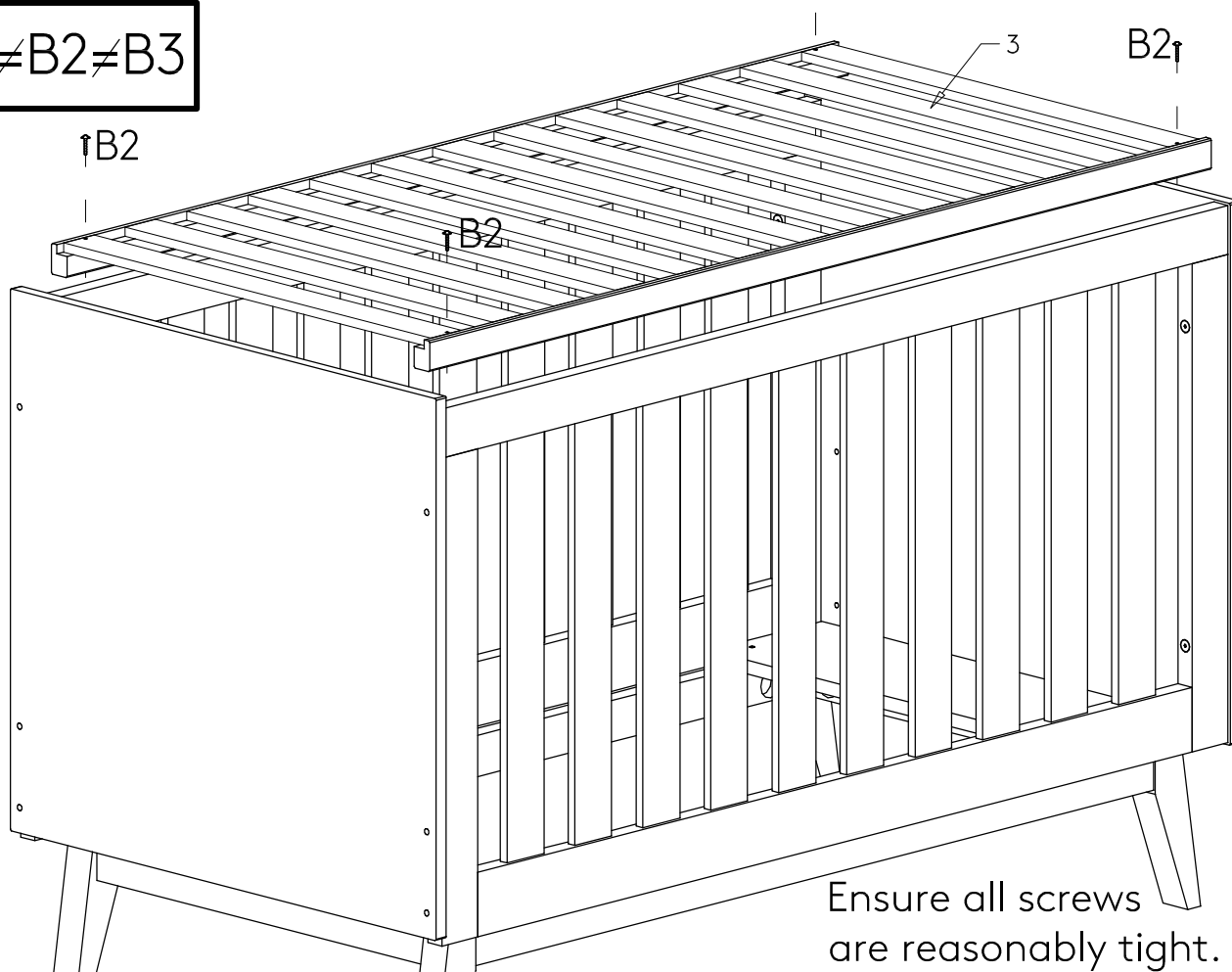
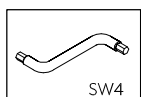
B1≠B2≠B3



X-Y (?)

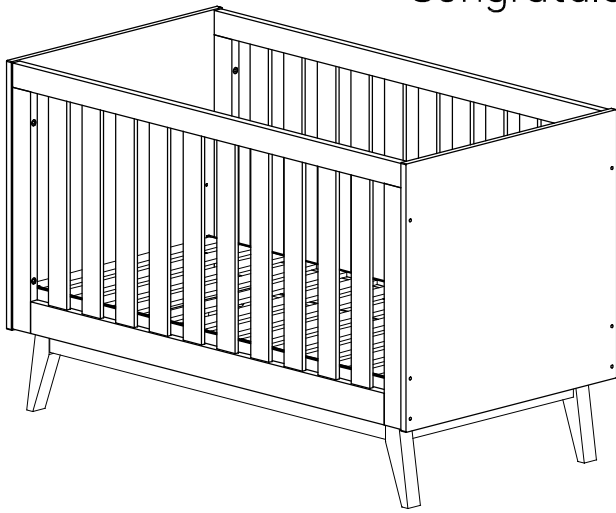


! B1≠B2≠B3

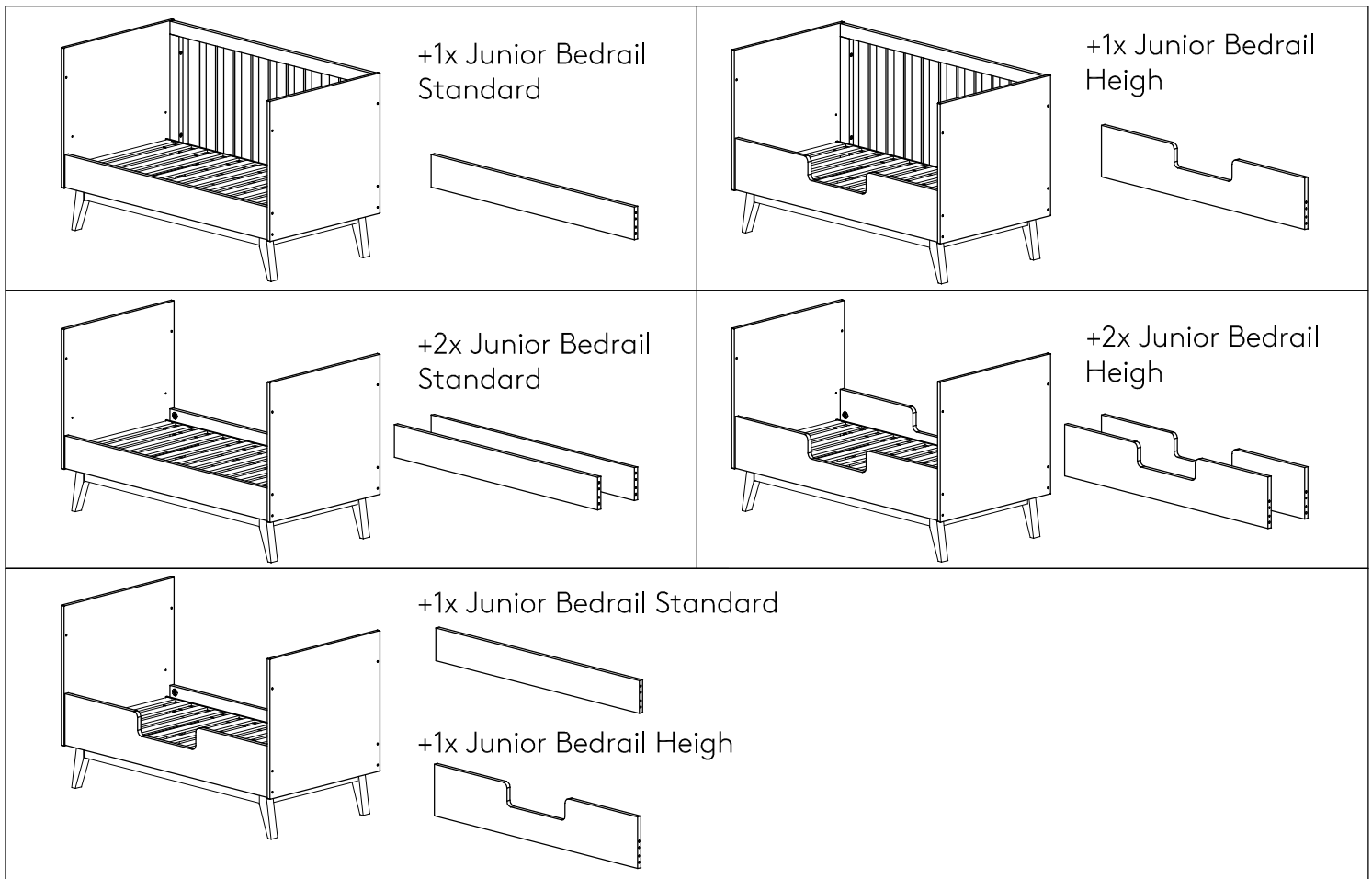


Ensure all screws are reasonably tight.

Congratulations. Your Babyrest Cot is ready for use.



Optional Bed Rails to convert to Junior Bed



Babyrest
By Anstel Brands Pty Ltd

Country of Manufacture: Poland

CONTACT US:

info@babyrest.com.au

+61 3 9131 6545

36 Sunline Drive,
Truganina, VIC 3029

www.anstel.com.au