

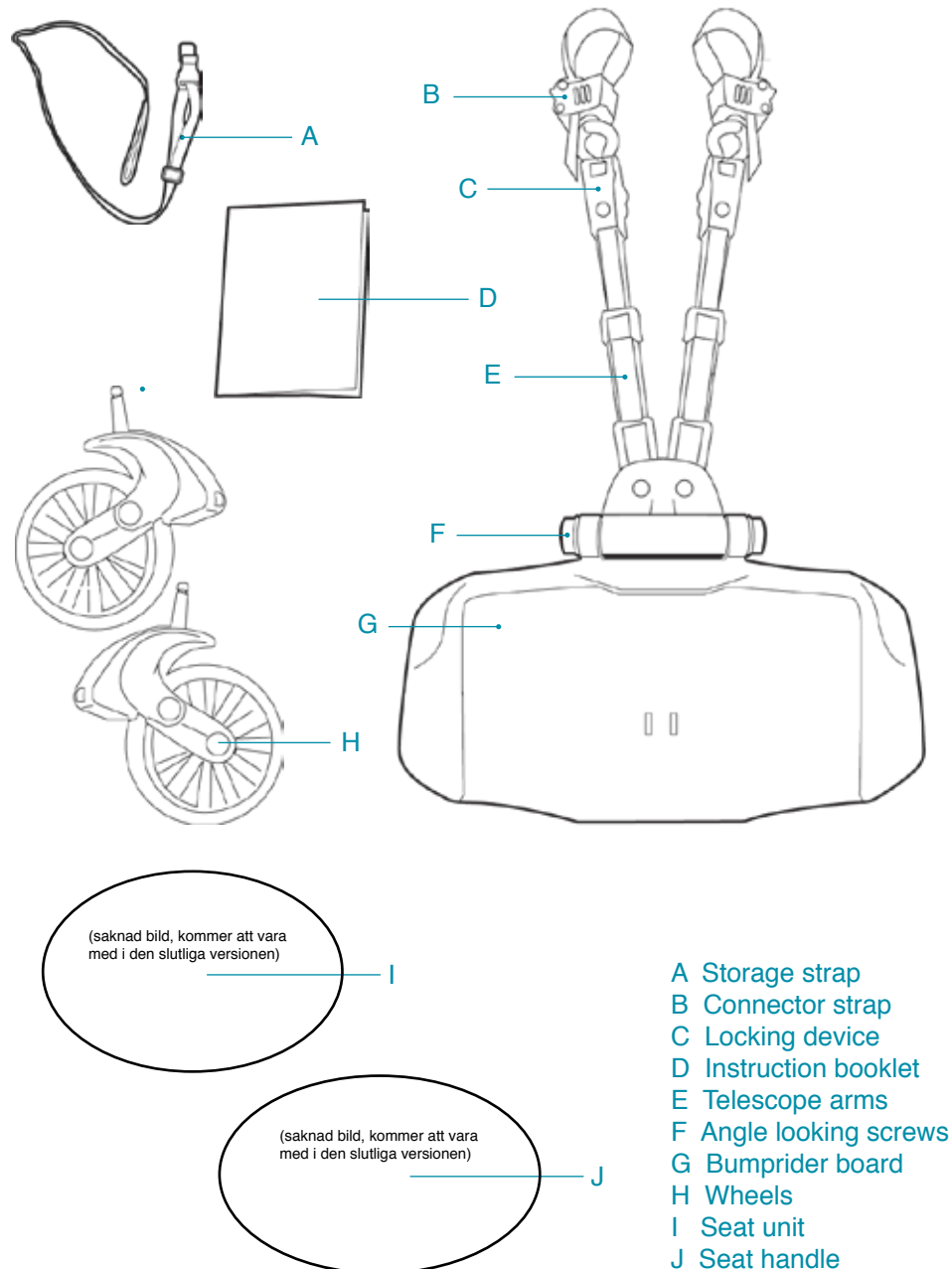
ride-on board
bump rider
+sit



Instructions

Please read the instruction carefully and keep for future reference.
The child may be hurt if you do not follow these instructions.

Parts and Components

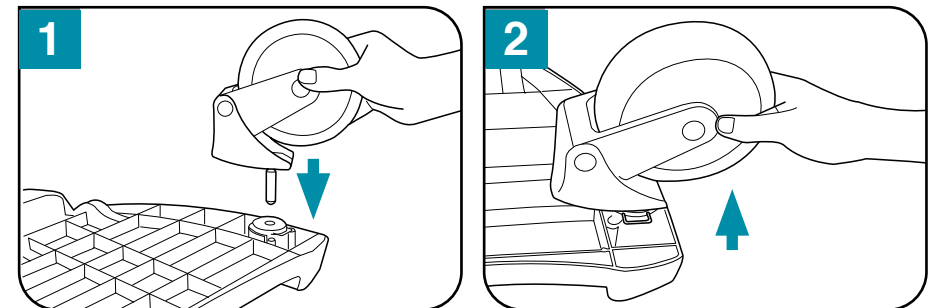


Operating instruction

Attaching/Detaching the wheels

(Figure 1) Attach: Place the main board upside down on a flat surface. Push the wheels firmly into the intended support holes until you hear a “click”.

(Figure 2) Detach: Hold the wheels. Then, force to pull out the wheels.



Attention!

To ensure safe assembly and operation of the Bumprider, please read all of these instructions thoroughly before attempting assembly or installation. Bumprider allows you to carry your child comfortably and effortlessly, and allows your child to travel further without getting tired. Bumprider is a practical product that can be attached quickly and easily to the back of most types of pushchairs.

WARNING!

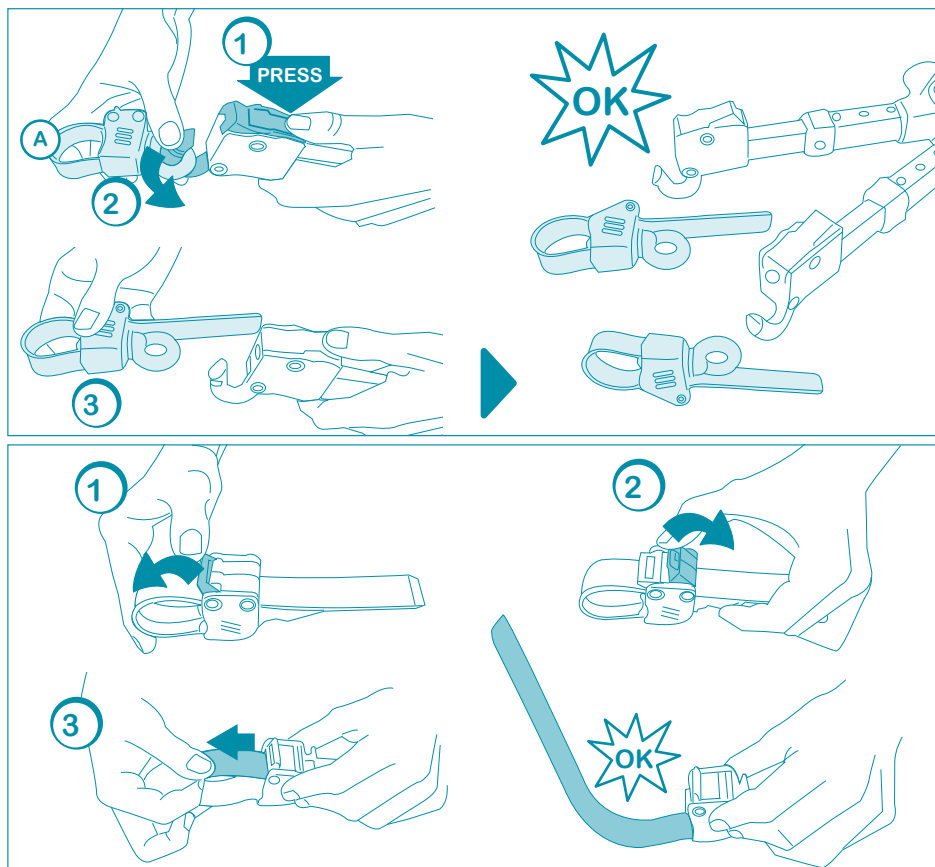
To avoid choking hazard and suffocation risk, remove all small parts and plastic packaging before using the board. Make sure that all small parts and plastic packaging is kept away from children at all times and is disposed of safely,

Operating instruction

Attaching the board and using the connectors

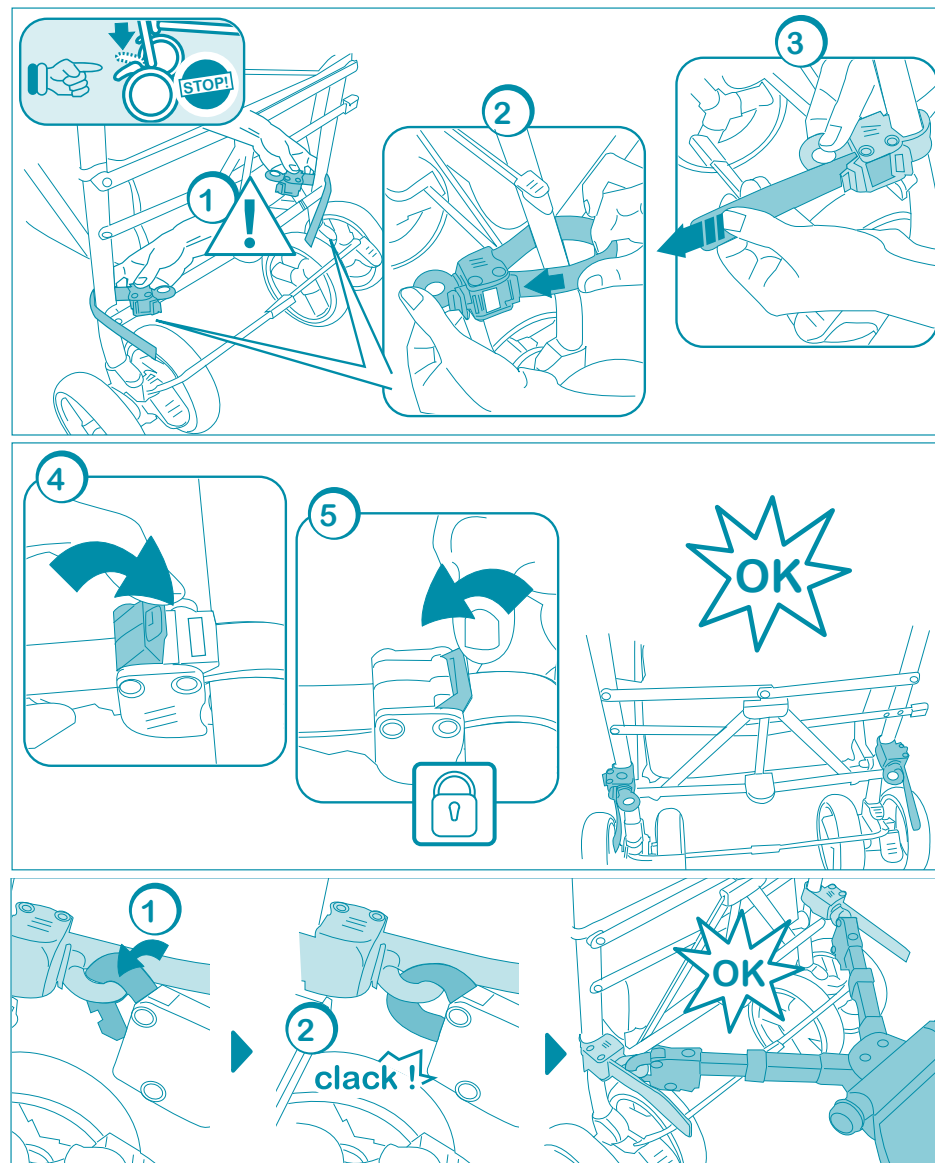
The connectors can be attached either directly to the chassis or to the rear bar of the stroller. Please follow the illustrated instructions following to make sure that you Bumprider is connected properly and safe.

Once mounted please make sure that all parts are working properly and that everything is correctly installed before use.

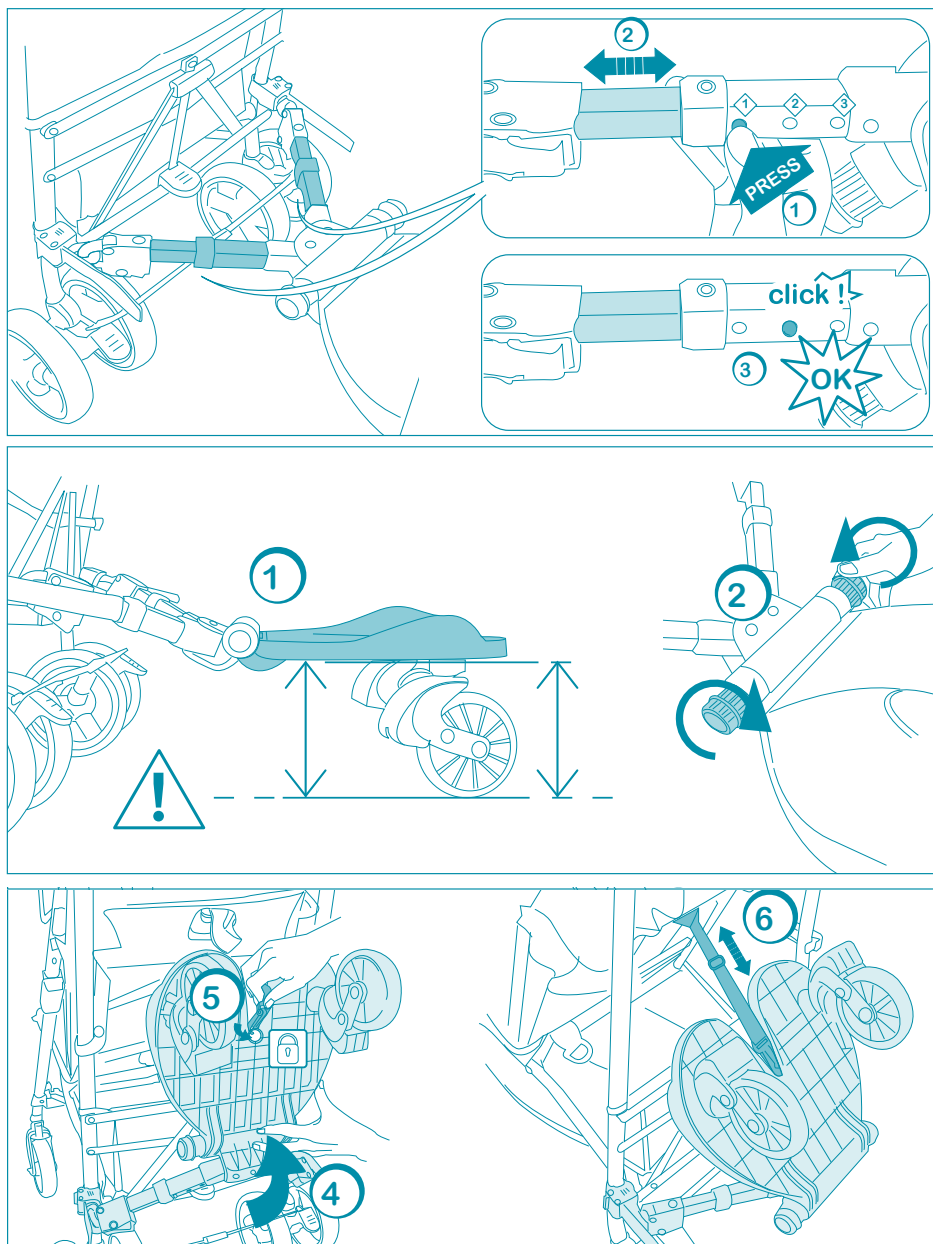


Operating instruction

Attention! Do not attach Bumprider to the brakes or any moving part of the stroller



Mounting and storage mode



* Please note that the board design on the pictures shows Bumprider without seat, but the functionality is the same.

WARNING!

- The intended use is for 1 child at a time, approximate age of year 2 to 5 years old, maximum weight of 20kgs
- Always keep your hands on the stroller when the child is standing on the Bumprider. **NEVER LEAVE THE CHILD UNATTENDED.**
- Make sure the child riding is standing with both feet directly upon the anti-slip material on the board, or sitting firmly on the seat.
- Always check the Bumprider function and that all parts work properly and are securely attached before each use.
- Do NOT use the Bumprider if there are any broken, torn or missing parts.
- Never let children play with the Bumprider, it is not a toy.
- Before each use, check the connectors and tighten if necessary.
- Never engage the stroller parking brake while your child is standing on the Bumprider.
- The use of any accessories with the Bumprider that have not been approved by the manufacturer is NOT recommended.
- Note that different or any accessory that is not made from the same manufacturer may limit the warranty on the stroller and Bumprider.
- Only replacement parts supplied or recommended by the manufacturer/distributor shall be used.

Maintenance

- Lubricate all moving parts including the wheels regularly, with an oil based lubricant.
- Check that no dirt or gravel is stuck in the wheels, suspension, or moving parts before use
- When the Bumprider has been used in rainy weather, all parts shall be wiped dry after use.
- When cleaning, use warm water and a dry cloth. All parts should be lubricated again after cleaning.

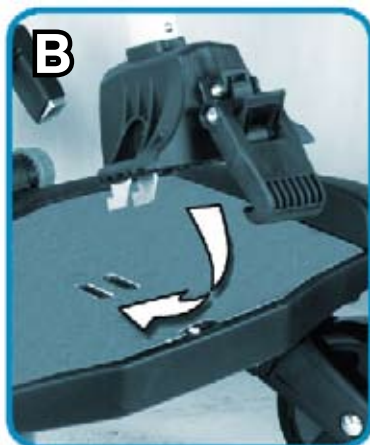
If proper maintenance is not done, the Bumprider may NOT perform properly. and problem may occur. Read the instruction manual carefully before using the Bumprider and save this for future reference. Your child's safety might be in jeopardy if these instructions are not followed. The ride-on board is approved according to European standard. EN-1888: 2012

Installing the seat

A. Install the seat handle and tighten the screws.



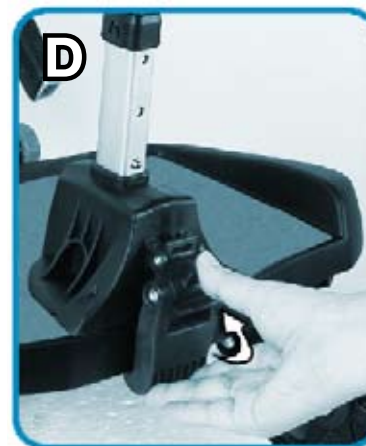
B. Insert the front steels into the board and push forward.



C. Fasten the fixed buckle.



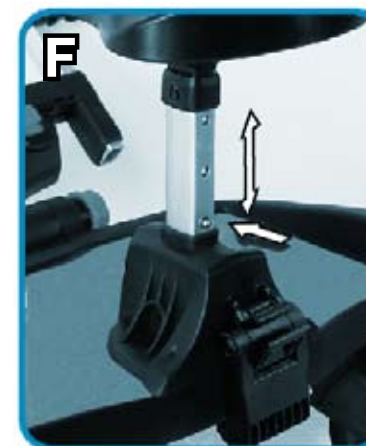
D. Hook the fixed buckle and press upward.



E. Fasten the safety lock.

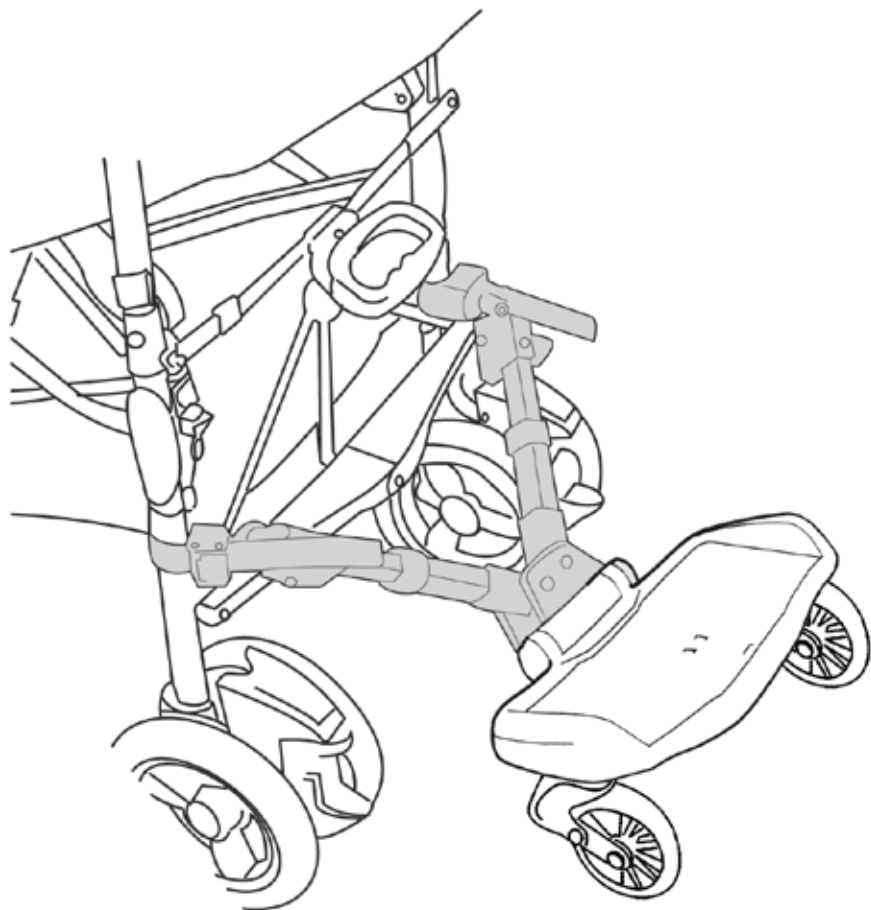


F. Adjust height to your preference.



Warning before usage!

Check your stroller's instruction manual if your stroller is tested for usage together with a stroller board. If there is any indication of danger related to such use, for example reasons like instability, weakness in construction etc, we recommend you to mount Bumprider onto a stroller which is recommended for such usage by your retailer. Control if your Bumprider makes your stroller unstable with your child standing onto it and if so, do not use it together. Make sure that the position at the stroller where you mount Bumprider can take the load of your child (maximum 20kgs) + the weight of your Bumprider. Check with your retailer which strollers are safe to use together with Bumprider.



ride-on board
bumprider
+sit

www.bumprider.com
Elite Group Sweden